

MP2238-01

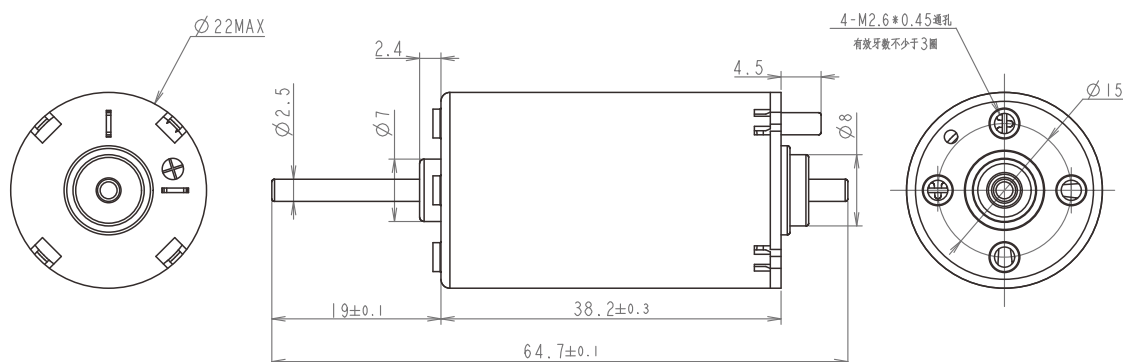
Φ22mm Graphite brush

Main parameters

- Four-magnetic pole
- 11W
- 5300rpm
- 16.6mNm



Technical illustration



Motor data (Rated value)

Rated voltage	V	12
Air -load speed	rpm	6300 ± 10%
No-load current	A	0.3 (Max)
Rated speed	rpm	5300 ± 10%
The rated torque	mNm	16.6
Rated current	A	1.20 ± 10%
Blocking torque	mNm	99.5 ± 7%
Blocking current	A	6.0 ± 10%
Maximum efficiency	%	65

Motor constants (Rated value)

Phase terminal resistance	Ω	2.0 ± 10%
Phase terminal inductance	mH	NA ± 10%
Torque constant	mNm/A	18 ± 20%
Speed constant	rpm/V	525 ± 20%
Speed/torque gradient	rpm/mNm	63 ± 20%
Mechanical time constant	ms	NA ± 20%
Rotor inertia	gcm ²	10 ± 20%

Note: Can be customized according to customer requirements