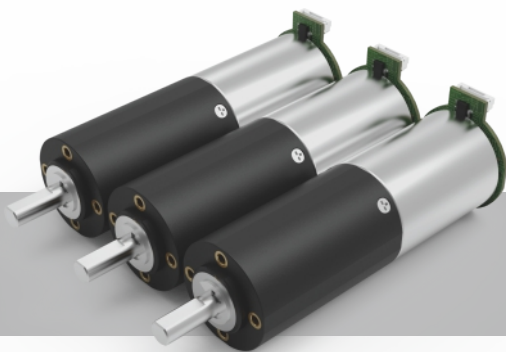


**28**  
mm

Plastic  
**P**  
塑料



# ZWBPD028028

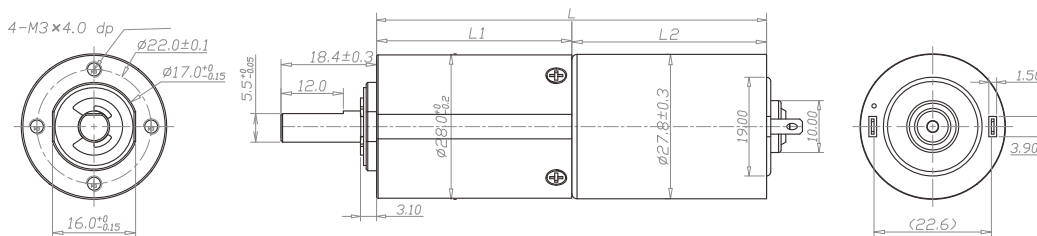
## 齿轮箱规格 Gearbox Specifications

外径	Outer diameter	28mm	轴承	Bearing	含油轴承 Porous bearing	滚动轴承 Rolling bearing
材质	Material	塑料 Plastic	轴向窜动	Axial endplay	≤0.1mm	≤0.1mm
旋转方向	Direction of rotation	cw & ccw	输出轴向负载	Radial loading on output shaft	≤50N	≤100N
齿轮箱回程差	Gear backlash	≤3° 可定制 Customizable	工作温度	Operating temperature range	-20 ~ +85°C	

## 齿轮级数 Gearbox Stages

		1	2	3	4
减速比	Reduction ratio	4 / 6	16 / 24 / 36	64 / 96 / 144 / 216	256 / 384 / 576 / 864 / 1296
最大容许扭力 (gf.cm)	Max rated torque of gearbox (gf.cm)	15000	15000	15000	15000
瞬间容许力矩 (gf.cm)	Instant torque of gearbox (gf.cm)	60000	60000	60000	60000
齿轮箱效率 (%)	Gearbox efficiency (%)	80	64	51	41
长度 (mm)	Gearbox length L1 (mm)	20.6	29.1	37.6	46.1

## 技术插图 | Technical Drawing



## 马达规格参数 Motor Specifications

马达(可选择) Motor type (optional)	直流有刷电机、直流无刷电机、步进电机 Brushed DC motor, Brushless DC motor, Stepper motor	输入速度 Input speed	≤15000rpm
电压(可选择) Voltage (optional)	3-24V	电流 Current	400mA max

参考数据 (马达定义值): 24v 7700rpm 下表根据马达定义值测试, 数据只作为参考值

型号 Model	Rated Speed 额定转速	Max Speed 最高转速	Max Rated Torque 额定容许力矩	Max Instant Torque 瞬间容许力矩	Reduction Ratio 减速比	Gearbox Length 减速箱长 L1	Overall Length 总长 L
	rpm	rpm	gf.cm	gf.cm			
ZWBPD028028-4	1658	3000	15000	60000	4	20.6	58.1
ZWBPD028028-6	1105	2000	15000	60000	6		
ZWBPD028028-16	413	750	15000	60000	16	29.1	66.6
ZWBPD028028-24	276	500	15000	60000	24		
ZWBPD028028-36	181	333	15000	60000	36		
ZWBPD028028-64	104	188	15000	60000	64	37.6	75.1
ZWBPD028028-96	69	125	15000	60000	96		
ZWBPD028028-144	46	83	15000	60000	144		
ZWBPD028028-216	31	56	15000	60000	216		
ZWBPD028028-256	26	47	15000	60000	256	46.1	83.6
ZWBPD028028-384	17	31	15000	60000	384		
ZWBPD028028-576	12	21	15000	60000	576		
ZWBPD028028-864	8	14	15000	60000	864		
ZWBPD028028-1296	5	9	15000	60000	1296		

注: 可根据客户要求定制 Please contact us for customized products