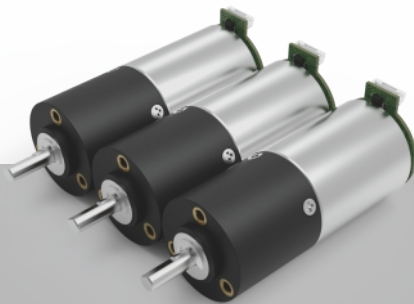


24  
mm

Plastic  
P  
塑料



# ZWBPD024024

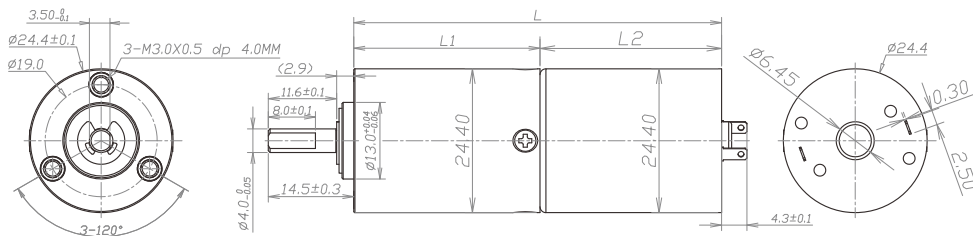
## 齿轮箱规格 Gearbox Specifications

外径	Outer diameter	24mm	轴承	Bearing	含油轴承	Porous bearing	滚动轴承	Rolling bearing
材质	Material	塑料 Plastic	轴向窜动	Axial endplay	≤0.2mm		≤0.2mm	
旋转方向	Direction of rotation	cw & ccw	输出轴径向负载	Radial loading on output shaft	≤50N		≤100N	
齿轮箱回程差	Gear backlash	≤3° 可定制 Customizable	工作温度	Operating temperature range	-20 ~ +85°C			

## 齿轮级数 Gearbox Stages

		1	2	3	4
减速比	Reduction ratio	4 / 6	16 / 24 / 36	64 / 96 / 144 / 216	256 / 384 / 576 / 864 / 1296
最大容许扭力 (gf.cm)	Max rated torque of gearbox (gf.cm)	15000	15000	15000	15000
瞬间容许力矩 (gf.cm)	Instant torque of gearbox (gf.cm)	45000	45000	45000	45000
齿轮箱效率 (%)	Gearbox efficiency (%)	85	73	65	58
长度 (mm)	Gearbox length L1 (mm)	18.5	24.5	31.5	38.65

## 技术插图 | Technical Drawing



## 马达规格参数 Motor Specifications

马达(可选择)	Motor type (optional)	直流有刷电机、直流无刷电机、空心杯电机、步进电机 Brushed DC motor, Brushless DC motor, Coreless motor, Stepper motor	输入速度	Input speed	≤15000rpm
电压(可选择)	Voltage (optional)	3-24V	电流	Current	300mA max

参考数据 (马达定义值): 12v 6000rpm 下表根据马达定义值测试, 数据只作为参考值

型号 Model	Rated Speed 额定转速	Max Speed 最高转速	Max Rated Torque 额定容许力矩	Max Instant Torque 瞬间容许力矩	Reduction Ratio 减速比	Gearbox Length 减速箱长 L1	Overall Length 总长 L
	rpm	rpm	gf.cm	gf.cm		mm	mm
ZWBPD024024-4	1875	7500	15000	45000	4	18.5	49.3
ZWBPD024024-6	1250	5000	15000	45000	6		
ZWBPD024024-16	469	1875	15000	45000	16	24.5	55.3
ZWBPD024024-24	313	1250	15000	45000	24		
ZWBPD024024-36	208	833	15000	45000	36		
ZWBPD024024-64	117	469	15000	45000	64	31.5	62.3
ZWBPD024024-96	78	313	15000	45000	96		
ZWBPD024024-144	52	208	15000	45000	144		
ZWBPD024024-216	35	139	15000	45000	216		
ZWBPD024024-256	29	117	15000	45000	256	38.65	69.45
ZWBPD024024-384	20	78	15000	45000	384		
ZWBPD024024-576	13	52	15000	45000	576		
ZWBPD024024-864	9	35	15000	45000	864		
ZWBPD024024-1296	6	23	15000	45000	1296		

注: 可根据客户要求定制 Please contact us for customized products