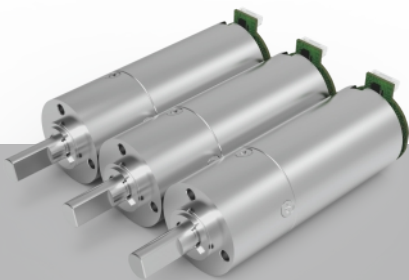


22  
mm

Metal  
五金



# ZWBMD022022

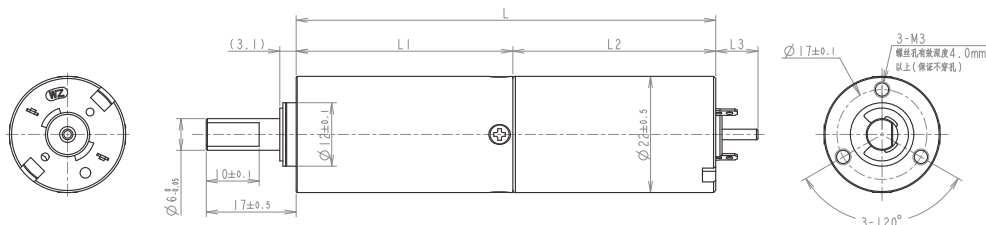
## 齿轮箱规格 Gearbox Specifications

外径 Outer diameter	22mm	轴承 Bearing	含油轴承 Porous bearing	滚动轴承 Rolling bearing
材质 Material	五金 Metal	轴向窜动 Axial endplay	≤0.1mm	≤0.1mm
旋转方向 Direction of rotation	cw & ccw	输出轴径向负载 Radial loading on output shaft	≤120N	≤170N
齿轮箱回程差 Gear backlash	≤2° 可定制 Customizable	工作温度 Operating temperature range	-30 ~ +100°C	

## 齿轮级数 Gearbox Stages

	1	2	3	4
减速比 Reduction ratio	4 / 6	16 / 24 / 36	64 / 96 / 144 / 216	256 / 384 / 576 / 864 / 1296
最大容许扭力 (gf.cm) Max rated torque of gearbox (gf.cm)	15000	15000	15000	15000
瞬间容许力矩 (gf.cm) Instant torque of gearbox (gf.cm)	36000	36000	36000	36000
齿轮箱效率 (%) Gearbox efficiency (%)	90	85	80	75
长度 (mm) Gearbox length L1 (mm)	19.1	26.4	33.7	41

## 技术插图 | Technical Drawing



## 马达规格参数 Motor Specifications

马达(可选择) Motor type (optional)	直流无刷电机、空心杯电机、步进电机 Brushless DC motor, Coreless motor, Stepper motor	输入速度 Input speed	≤15000rpm
电压(可选择) Voltage (optional)	3-24V	电流 Current	300mA max

参考数据 (马达定义值): 24v 8300rpm 下表根据马达定义值测试, 数据只作为参考值

型号 Model	Rated Speed 额定转速	Max Speed 最高转速	Max Rated Torque 额定容许力矩	Max Instant Torque 瞬间容许力矩	Reduction Ratio 减速比	Gearbox Length 减速箱长 L1	Overall Length 总长 L
	rpm	rpm	gf.cm	gf.cm		mm	mm
ZWBMD022022-4	1875	7500	15000	36000	4	19.1	57.5
ZWBMD022022-6	1250	5000	15000	36000	6		
ZWBMD022022-16	469	1875	15000	36000	16	26.4	64.8
ZWBMD022022-24	313	1250	15000	36000	24		
ZWBMD022022-36	208	833	15000	36000	36		
ZWBMD022022-64	117	469	15000	36000	64	33.7	72.1
ZWBMD022022-96	78	313	15000	36000	96		
ZWBMD022022-144	52	208	15000	36000	144		
ZWBMD022022-216	35	139	15000	36000	216		
ZWBMD022022-256	29	117	15000	36000	256	41	79.4
ZWBMD022022-384	20	78	15000	36000	384		
ZWBMD022022-576	13	52	15000	36000	576		
ZWBMD022022-864	9	35	15000	36000	864		
ZWBMD022022-1296	6	23	15000	36000	1296		

注: 可根据客户要求定制 Please contact us for customized products